



The Village

A gift from the people of Minnesota to the People of Sri Lanka

Construction : Houses are near Completion

Most of the houses are near completion. The door and window frames are fixed. We also inspected the concrete louvers that have been built on the site. By next few weeks, the builders will begin on putting up the roofs. [Read Jayani's Journal](#)

AFH completes Community Center preliminary plan

We met with a group of architects from AFH ([Architects For Humanity](#)). We gave them all the information that was needed for drawing up plans for the learning center and then they spent a whole day coming up with a suitable layout. I also got to show a clip from my video camera on the land that it would be built on [Read More at Becky's blog](#)

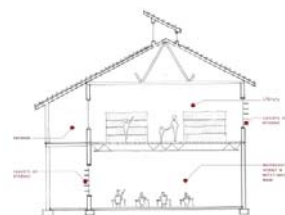
Govt. agent calls for meeting to discuss the issues..

Galle District Government agent in Sri Lanka invited the donors to discuss the land and infrastructure issues pertaining to the housing construction. MnSLFF housing project is expected to be completed 2 months before the schedule date.

Family Profiles to be developed

Asitha Sandanayake, one of the MnSLFF Chartered members will be leaving to Sri Lanka in early August. He will collect the demographic data of each recipient families.

Volume1, Issue 4, Aug. 10 2005



[Community Center](#) section looking east. One of the preliminary drawings done by Architects for Humanity.

Newsletter Spotlight

- Water and Electricity Supply in progress
- AFH photos
- Construction in Progress
- Matching Funds from St. Paul Foundation
- Soon the provincial Council will release the recipient list

Potential house recipients



List is in preparation ...

Matching Funds from the Saint. Paul Foundation

The Saint. Paul Foundation has approved a grant of \$89,979.15 to finance tsunami relief efforts by the Minnesota Sri Lanka Friendship Foundation. \$89,729.15 of this grant is one-to-one matching funds for contributions raised within the State of Minnesota for direct support of tsunami relief efforts. \$250.00 of this grant is for organizational support. PATH - [Pan Asian Tsunami Healing](#) is organizing this effort with St. Paul Foundation.

Donations:

You can donate by credit card online. Please send Checks payable to:
MnSLFF
8235 Marsh Creek Rd.
Woodbury MN 55125

MnSLFF is a registered 501(c)(3) organization with Tax ID No. 11-3737913



After a great Sri Lankan feast each group presented their work to the satisfied designers ...



During her last visit to the construction site Jayani met with some children ...

